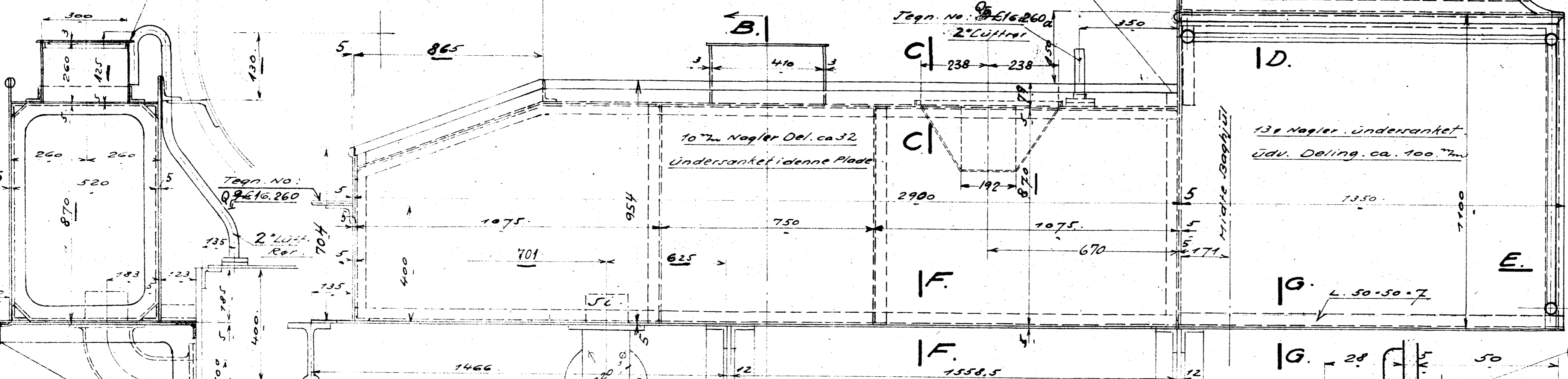


Q95
Tegn. No: 9216.090

2035

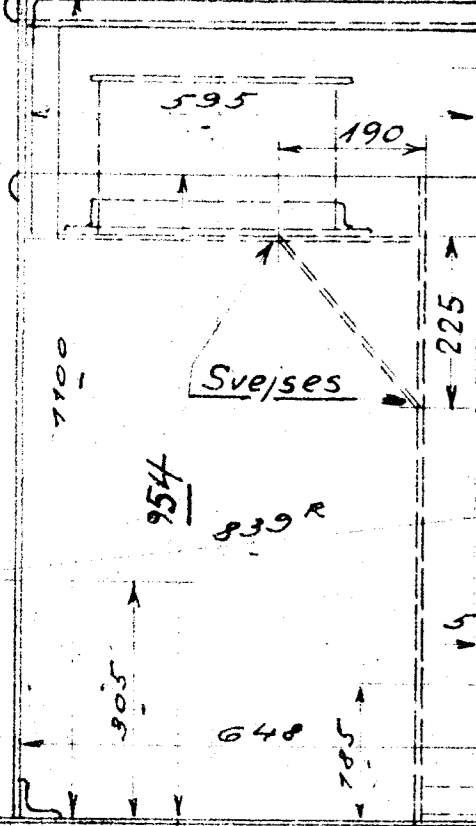
STÅLBESTE NO 42298.

1	8	Nagler	61-24	
2	30	do	61-38	
3	10	do	61-52	
4	385	do	101-20	
5	735	do	101-28	
6	28	do	101-35	
7	50	do	131-20	
8	5	30-te	8x44	STÅLBESTE NO 81023
9	2	do	58x36	
10	10	do	58x30	Fluss, sort
11	1	do	58x38	
12	7	Skiver	58x2	Fluss, sort
13	5	Bolte	58x30	Fluss, sort
14	1	Vinkel		Fluss, sort

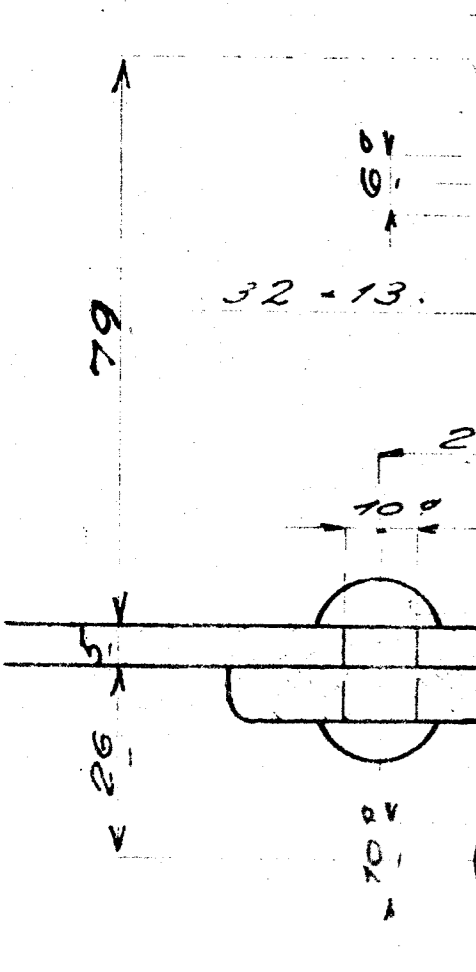


Snit B-B

Tegn. No: 9216.310
Q95C



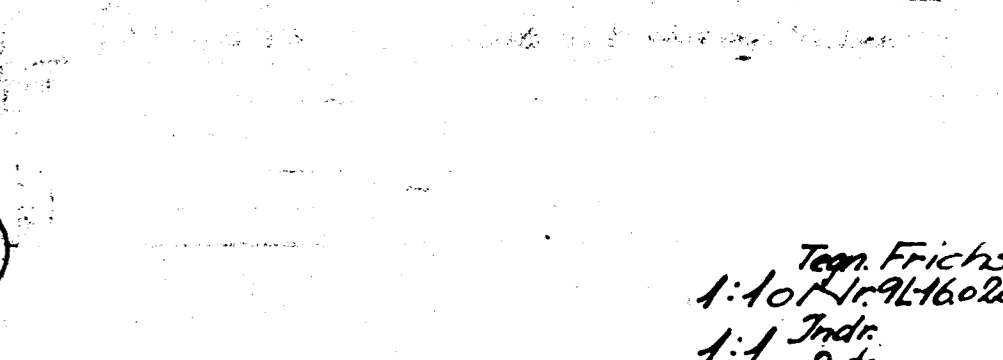
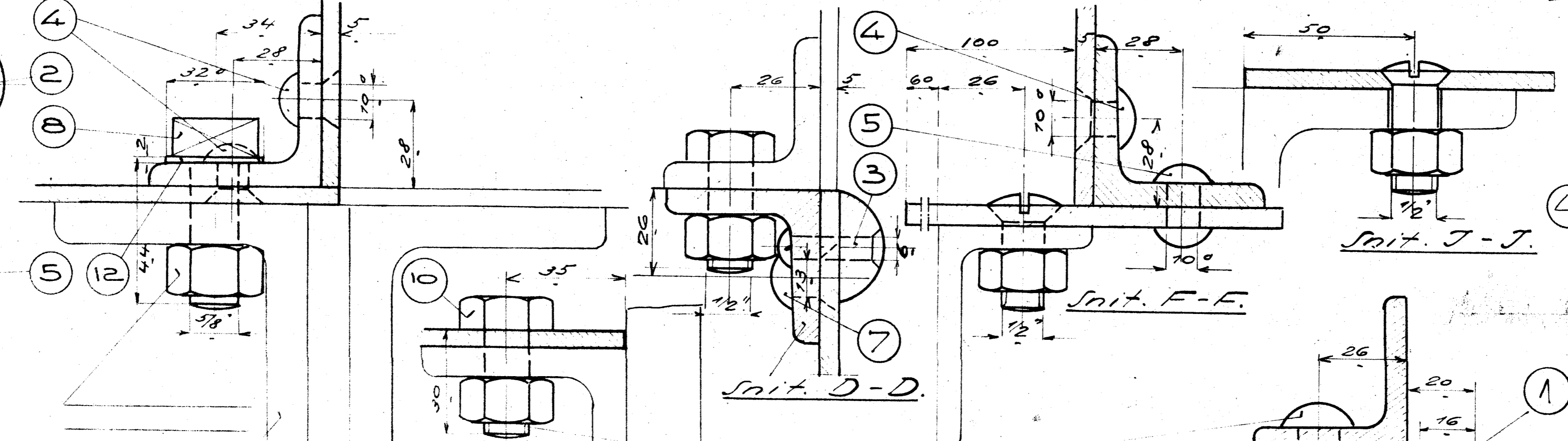
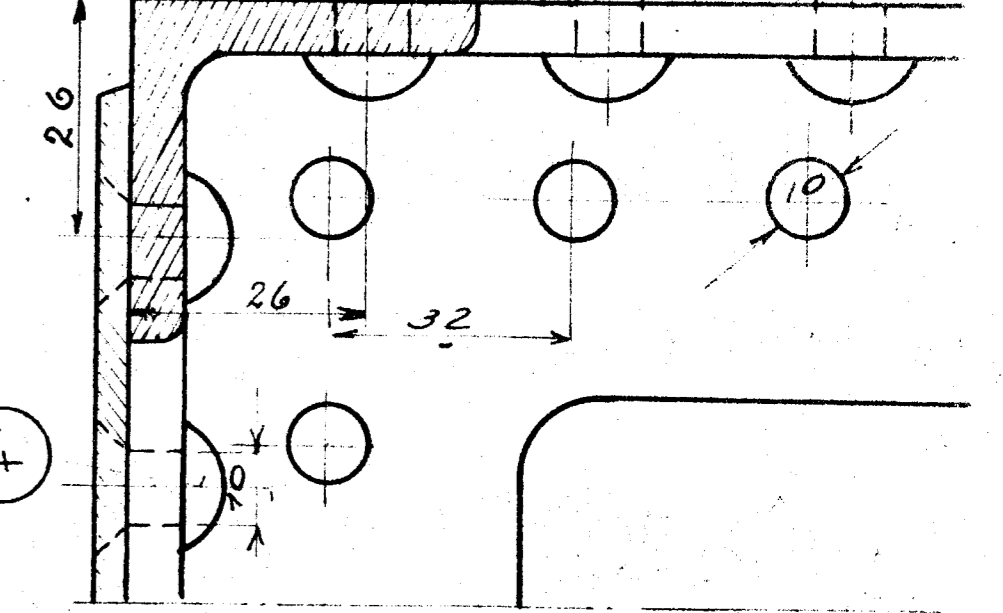
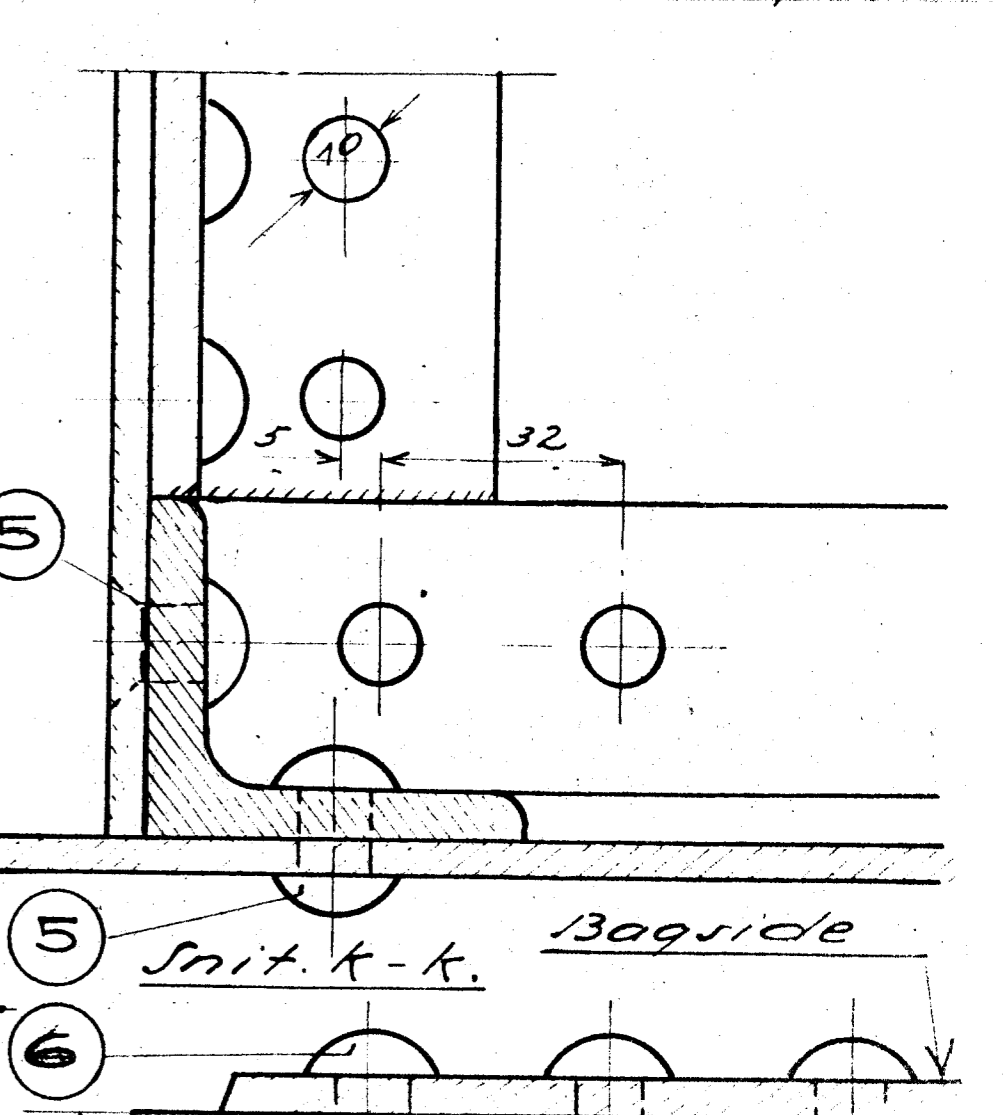
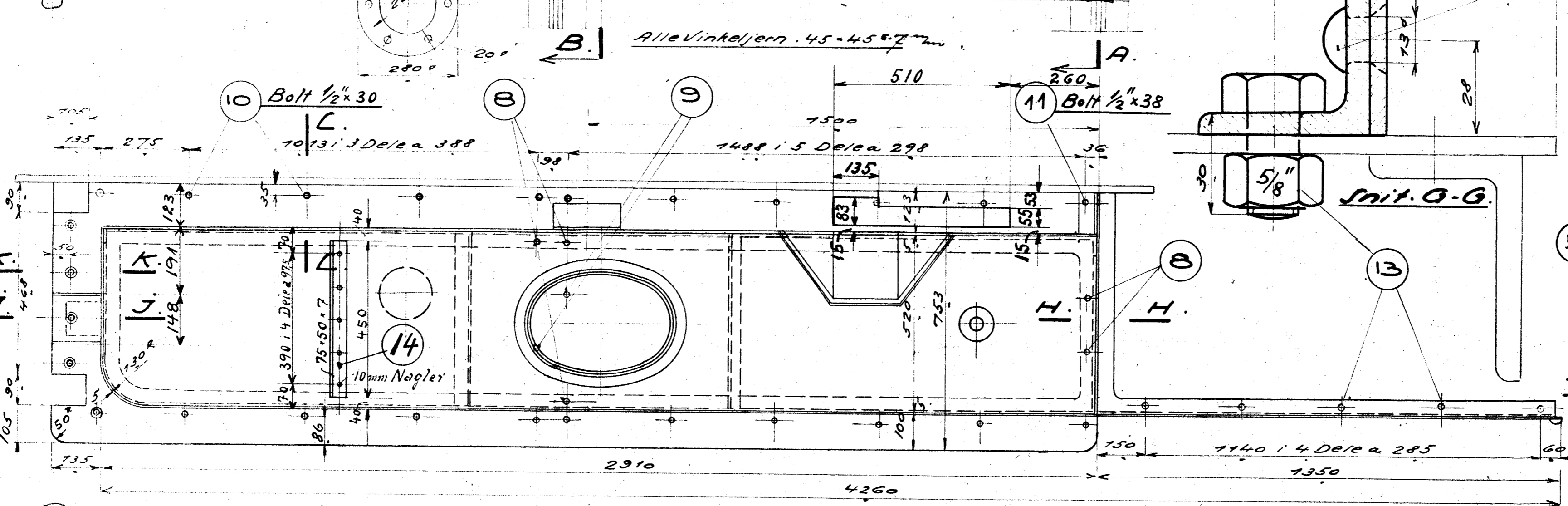
Snit A-A



Snit H-H

Snit L-L

Snit E-E



Venstre Vandkasse
D. Tenderloka. Litra Q. 16.020

Tegn. Frichs.
1:10 K. 1:16 L. 1:60 L. 1:100 L.
Indic.
1:1. Dato.